



**HOOD RIVER COUNTY**

SCHOOL DISTRICT

*Excellence. Every student. Every day.*

**Ready Schools, Safe Learners**

Rich Polkinghorn, Superintendent

Our guiding  
document

# READY SCHOOLS, SAFE LEARNERS

**GUIDANCE FOR SCHOOL YEAR 2020–21**

**VERSION 1.5.8  
JUNE 30, 2020**



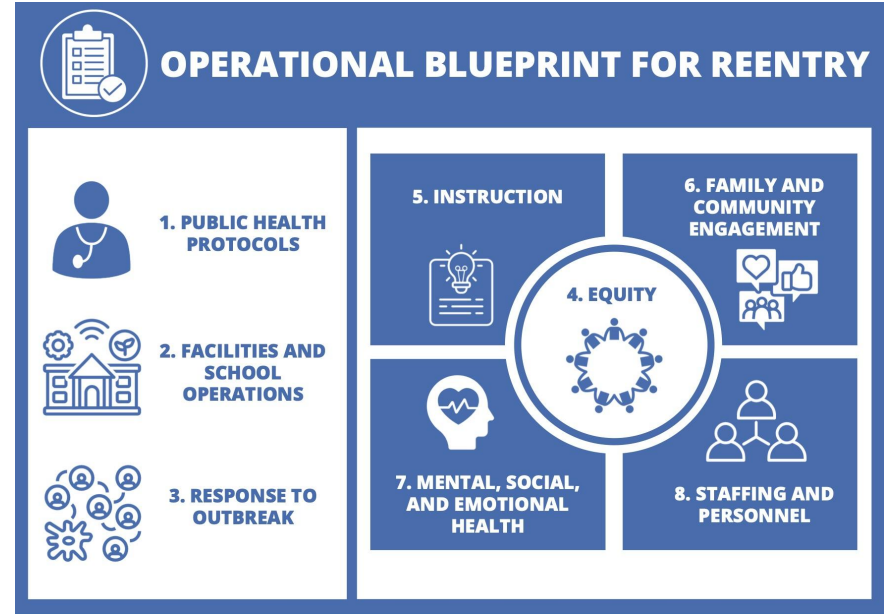
OREGON  
DEPARTMENT OF  
EDUCATION

*Oregon achieves . . . together!*

Oregon  
Health  
Authority

# Eight Components

1. Public Health Protocols
2. Facilities and School Operations
3. Response to Outbreak
4. Equity
5. Instruction
6. Family and Community Engagement
7. Mental, Social and Emotional Health
8. Staffing and Personnel



# State Metrics for Reopening School

County Metrics - must be met for three consecutive weeks

1. Case Rate in a county:  $\leq 10$  cases per 100,000 people in the preceding 7 days
2. Test Positivity a county:  $\leq 5\%$  positivity in the preceding 7 days

AND

State Metric - must be met for three consecutive weeks

1. Test Positivity rate statewide:  $\leq 5\%$  positivity in the preceding 7 days

# Current Metrics in Hood River

## Case Rate in Hood River:

Week of 7/5/2020 - 47.0

Week of 7/12/2020 - 111.2

Week of 7/19/2020 - 85.5

## Test Positivity Rate in Hood River:

Week of 7/5/2020 - 5.8%

Week of 7/12/2020 - 5.0%

Week of 7/19/2020 - 5.8%

# Exceptions

Some exceptions are permitted for students in grades K-3 and Remote Schools

Qualifications for exceptions:

- No COVID-19 activity in the school community.
- Case rate <30 cases per 100,000 people in the preceding 7 days and for three consecutive weeks
- Test positivity rate  $\leq 5\%$  in the preceding 7 days and for three consecutive weeks

# Instructional Model Options

Comprehensive Distance Learning\*

OR

Online Learning Model

\* Still aim to return to Onsite Learning when it is permissible to do so.

# Comprehensive Distance Learning

All learning is accessed on-line.

- Currently proposed through at least November 5.
- Safest Model - used when in-person instruction poses health risks to students and staff.
- Students use adopted school curriculum and established digital curriculum.
- Teacher led instruction.
- Predictable daily schedule and routines.
- Students work virtually with peers and teacher(s).
- Students remain connected to their local school and teachers.



# Comprehensive Distance Learning - Teaching and Learning

Provide a virtual orientation for students and families to understand virtual tools

Provide at least one synchronous learning opportunity for each student, each day

Provide consistent and timely feedback on student progress toward learning goals

Incorporate time for check-ins and peer interactions

Develop a classroom culture

Provide synchronous specially designed instruction for students with an IEP

# Comprehensive Distance Learning - Instruction Time

Teacher-facilitated learning - 50% or more of instruction is guided synchronously or asynchronously by a teacher.

Applied learning - opportunities for students to extend or apply their teacher facilitated learning.

# Comprehensive Distance Learning - Assessment

Requires an equitable grading policy

Require regular progress reporting to students and families

Smarter Balanced Assessment - still unknown

# Comprehensive Distance Learning - Attendance

K-5 - Attendance is taken once per day

6-12 - Attendance is taken once per scheduled course

# Comprehensive Distance Learning - Clubs and Activities

Ensure access to activities and clubs is available to students to the extent possible

We are still awaiting further guidance from OSAA regarding athletics

# Comprehensive Distance Learning - Social Emotional Health

Prioritize care and connection

Establish predictable routines and schedules for students to find connection to school and a sense of belonging

Implement comprehensive school counseling programs

# Ongoing Development

Subcommittees have been formed and are working for the following components.

***Equity & Family Community Engagement*** - Rich Polkinghorn and Patricia Ortega-Cooper

***Instruction and Assessment*** - Bill Newton

***Mental and Social-Emotional Health*** - Anne Carloss

***Staffing and Personnel*** - Catherine Dalbey

# Online Learning Model - Hood River Options Academy

This option means students attend school 100% online and receive their instruction through a remote learning program. The online learning model will be aligned with the Hood River Options Academy (our current online program), utilizing the rigorous and accredited curriculum currently implemented within that program.

Information about how to select this option can be found on our webpage.



# Online Learning - Hood River Options Academy

Esta opción significa que los estudiantes asisten a la escuela en la program en linea de HRCSD

- Temporary program for a minimum of two trimesters (K-5) or one semester (6-12).
- Students use adopted school curriculum and established digital curriculum.
- Access to teacher for support.
- Flexible daily schedule and routines.
- Best for students work independently

# HRCSD Return-to-School Options 2020-21

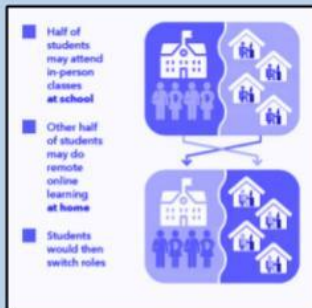
## Comprehensive Distance Learning

- Currently proposed through at least November 5.
- Safest Model - used when in-person instruction poses health risks to students and staff.
- Students use adopted school curriculum and established digital curriculum.
- Teacher led instruction.
- Predictable daily schedule and routines.
- Students work virtually with peers and teacher(s).
- Students remain connected to their local school and teachers.



## Hybrid Learning

- Limited on-site instruction with safety protocols.
- Students attend school 2-3 days per week, depending on grade level and need.
- Students will do remote learning on off-site days.
- Small group instruction.



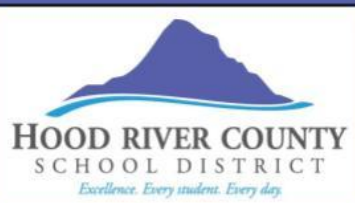
## OR

## Hood River Options Academy

- Temporary program for a minimum of two trimesters (K-5) or one semester (6-12).
- Students use adopted school curriculum and established digital curriculum.
- Access to teacher for support.
- Flexible daily schedule and routines.
- Students work independently.



Mobile internet access devices available to families.



Hood River County School District iPad is provided for every student.



# Next Steps

Ongoing community engagement and communication

Subcommittees continue to work on the following components.

- ***Equity & Family Community Engagement*** - Rich Polkinghorn and Patricia Ortega-Cooper
- ***Instruction and Assessment*** - Bill Newton
- ***Mental and Social-Emotional Health*** - Anne Carloss
- ***Staffing and Personnel*** - Catherine Dalbey

# Next steps

If you want to enroll in the HROA - fill out the form on our website. It might be buried a bit in the announcements section - you'll have to scroll down a bit.

[HROA Enrollment Form](#)

If you do not want to enroll in HROA - no action is needed.

# Questions

Contact information:

[hrcsd.superintendent@hoodriver.k12.or.us](mailto:hrcsd.superintendent@hoodriver.k12.or.us)

541.387.5013

[Link to infographic](#)

[https://drive.google.com/file/d/109HCbPnzXYf--ofP\\_MUmt1\\_NQfjJXT3B/view?usp=sharing](https://drive.google.com/file/d/109HCbPnzXYf--ofP_MUmt1_NQfjJXT3B/view?usp=sharing)

Thank you