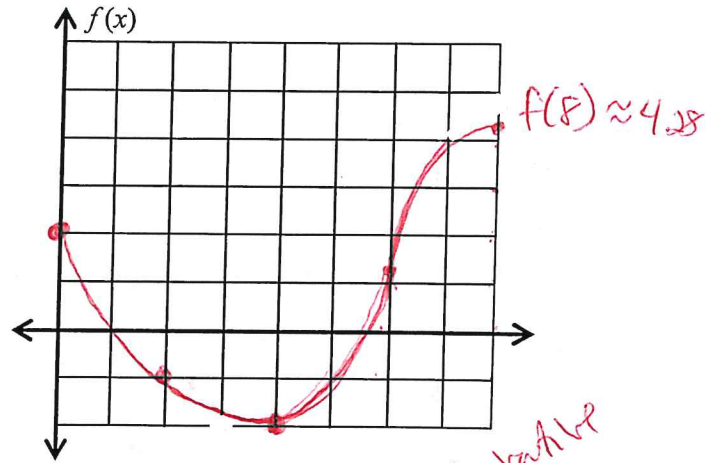
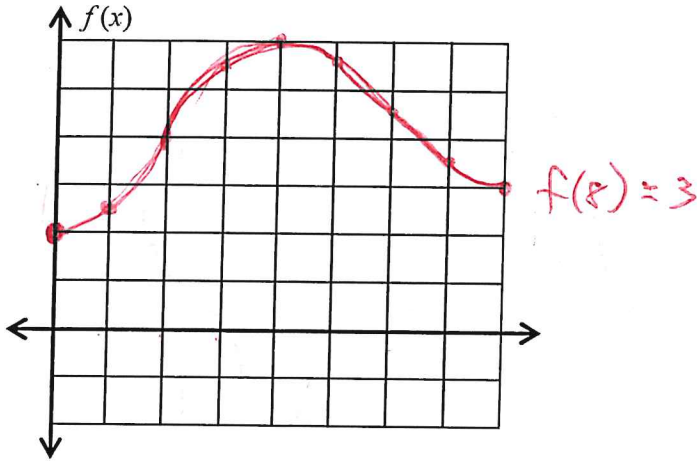
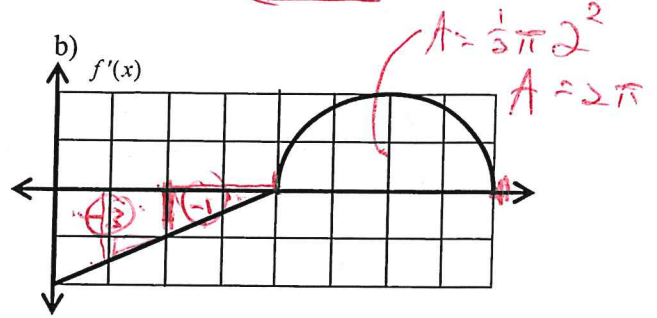
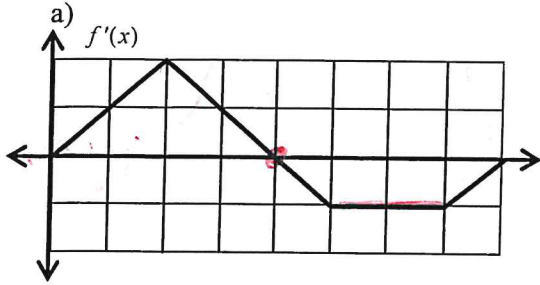


Sketching Antiderivatives

AP Calc AB

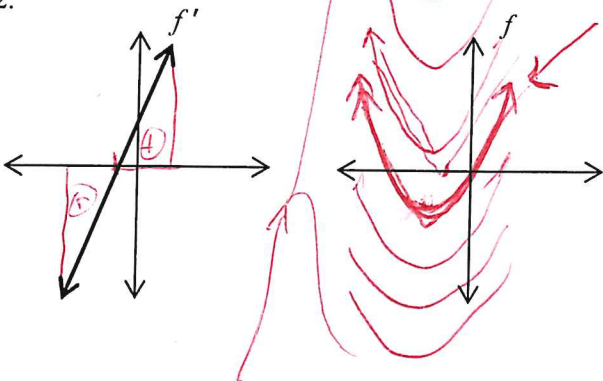
Name: Key

1. Consider the functions, $f'(x)$, below over the interval $0 \leq x \leq 8$. Sketch $f(x)$ if $f(0) = 2$.



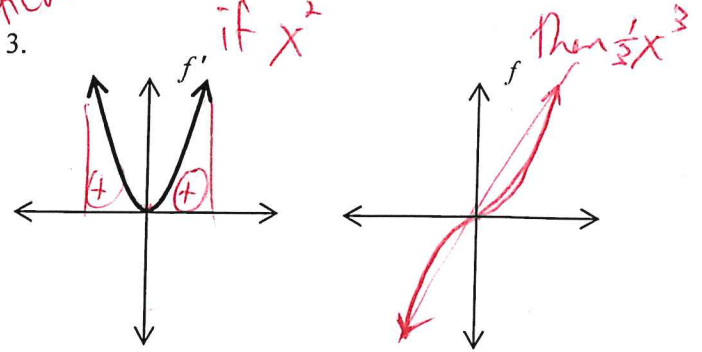
Sketch the graph of the antiderivative of $f'(x)$. Let $f(0) = 0$

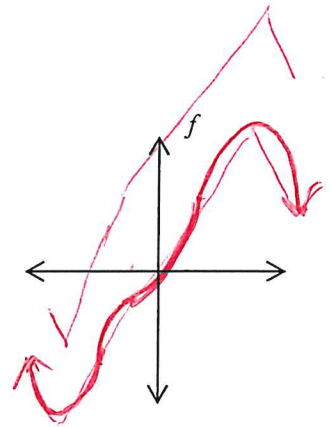
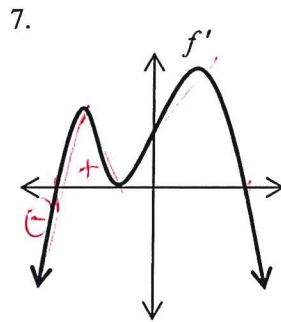
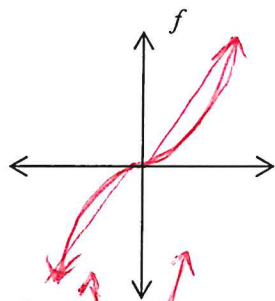
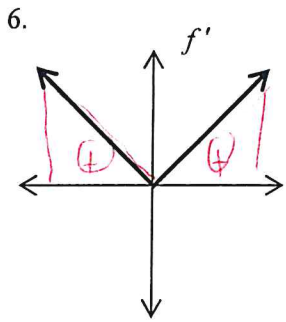
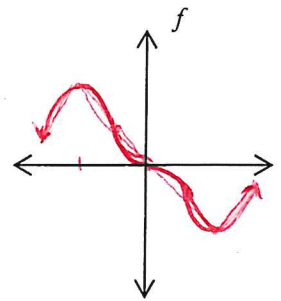
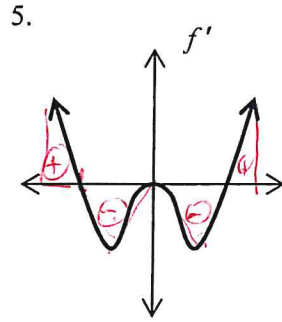
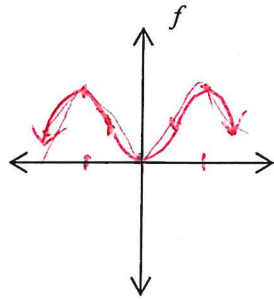
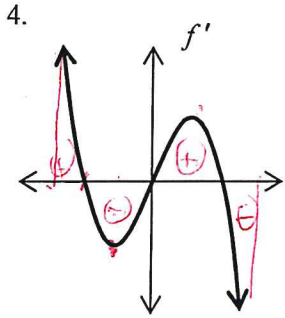
2.



general solutions

3.





Looks cubic,
but it's really two parabolas